



Exus X110E

TYPE	Pass-through dishwasher
LINE	EXUS LINE
BASKET	500x500
SIZE	620x770x1470/1930h



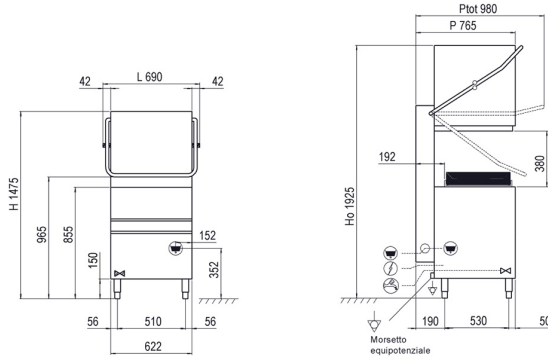
The **EXUS** line stands out for its wide range of models suitable for any situation. The simple electronic board control system makes it possible to set and control the rinsing and draining times and temperatures and the relevant **Thermostops**, crucial for ensuring excellent final results. With the control panel you can choose one of its **4 washing cycles** and one automatic drain cycle (with installed drain pump), easily view on the display the tank and boiler temperature, the messages of the Self-diagnosis system and the Scheduled Maintenance warning. The **smart Start button** changes colour to always keep you up-to-date on the dishwasher status with the greatest ease.

The **X110E** hood type dishwasher is the most suitable solution for businesses that are faced with the washing of different types of dishes, proving capable of washing glasses, dishes, medium sized objects and GN 1/1 baking trays in only 620 mm wide, ensuring a maximum productivity of 60 baskets/hour (1080 dishes/hour). The hood type models are fitted with an easily removable basket support for easy cleaning and a rounded moulded tank with integral filters for perfect draining and absolute hygiene. The **“PUSH TO START”** cycle start system ensures less waste preventing the start of empty washes.

The electronic control allows you to manage various parameters to give you an absolute customisation level and the continuous self-diagnosis allows you to minimise machine downtime, suggesting some operations to be verified. The self-cleaning cycle at the end of the day cleans the wash tank and empties the boiler from the hot water, preventing limestone forming inside. The standard double peristaltic electric rinse-aid and detergent dispenser ensures the best result from each wash cycle with great savings thanks to the precise dosage managed by the electronic card; whereas, the moulded washing and rinsing arms ensure great reliability and durability. The **Thermo-stop** function checks that washing and rinsing begin only when the desired temperature is reached. The bodywork is made entirely of **AISI 304 steel** and has been designed with all components in the front to allow easy technical assistance. Sturdy and reliable dishwashers to best deal with every moment of your day.







DISHWASHERS FEATURES EXUS LINE X110E

Dimensions - (mm) L - P - H	620x770x1470/1930h
n° baskets/hour - (+55°C)	Max 60
Height glass max	390mm
Ø height plate max	415mm
Height pot max	390mm
LT bread basket	40 (H=390mm)
Trays	GN1/1
Tank heating element - Tank capacity	4,5kW - 37l
Boiler heating element - Boiler capacity	5,4kW - 7,3l
Washing pump	1,34kW / 1,8Hp
Total power input / Current	6,74kW / 16A
Standard input voltage	400V3N - 50Hz
Recommended inlet water temperature	+55°C
Water hardness	7°f - 10°f
Water consumption per cycle (inlet suggested pressure 2 BAR)	2,4 l
Adjustable detergent and rinse-aid dispenser	STANDARD
STANDARD EQUIPMENT	
Basket for glasses dim.500x500x100mm	1
Basket for 18 dishes dim.500x500x100mm	2
8 division cutlery insert	1
Integral tank filter	STANDARD
OPTIONAL	
Optional 230V/3+T	●
Booster pump kit 0,5Hp	●
Drain pump kit 32W with Ecoclean	●
Boiler heating element 9kW	●
Basket for trays with 4 compartments dim.500x500x200mm	●
Inclined basket for wine glasses dim.500x500x170mm	●
Remote control with LCD display	●

● = OPTIONAL INSTALLABILE, ■ = OPTIONAL NON INSTALLABILE